

*NEW
Products*

محافظ هوشمند ولتاژ / جریان / مصرف انرژی Intelligent Voltage/ Current/ KWH 1P



NEW

Technical Data

Rated supply voltage	AC 220V	Operation voltage range	AC 80~400V(single phase)
Rated frequency	50/60Hz	Electric current(>A) setting range	1-40/63A /oFF
Overvoltage(>U)setting Range	230-300V /OFF	Undervoltage(>U)setting Range	210~140V/oFF
Kilowatt-hour protection value	1-9999/oFF	Rated Current	40/63A(subject to protect label)
>U And <U Trip Delay	0.5S	Reset/Start Delay	1~600S
Voltage measurement accuracy	2% (Not exceeding of the overall range)	Rated Insulation Voltage	400V
Output contact	1No	Electrical life	10 ⁵
Mechanical life	10 ⁶	Protection Degvree	IP20
Pollution Degree	3	Altitude	≤2000m
Operating temperature	-50 °C ~ 55 °C	Humidity	≤50%at40 °C (without condensation)
Storage temperature	-30° C~70° C		

Default setting

Technical Parameter	Setting range	Step	Factory Setting
Over-Voltage Protection Value	AC230V-300V/oFF	1V	AC280V
Under-Voltage Protection Value	AC210V-140V/oFF	1V	AC160V
Recovery delay time	1S-600S	1S	5S
Over-current protection value	1-40/63A/oFF	0.1A	63A
Continuous over-current protect times	1-20/OFF	1	oFF
Kilowatt-hour protection value	1-9999/oFF	1	300

Current Specification	15A	25A	32A	50A	63A
Rated Operating current(In,A)	15	25	32	50	63
Max Operating Current I _{max} (A,within 10 min)	25	30	40	60	80
Max power of load (KW)	3.6	5.5	7	11	13.9

Function setting

Voltage display
Current display
Kilowatt-hour display

▼ + SET Press simultaneously to reset Kwh

Click SET to set

Over-voltage protection value 230-300V/oFF

Click SET to set

Under -voltage protection value 210-140V/oFF

Click SET to set

Recovery delay time 1-600S

Click SET to set

Over-current protection value 1.0-63.0A/oFF

Click SET to set

Continuous over-current protect times A01-A20/oFF

Click SET to set

Kilowatt-hour protection value 1-9999/oFF

Long press set for 5 seconds to save

▲ ▼ To adjust the figure quickly by long time press the add or subtract key

Wiring and shape dimension

Wiring and shape dimension

Dimensions: 45mm (width), 60mm (height), 36mm (width), 81mm (height).

Voltage display
Current display
Kilowatt-hour display
Over-voltage
Overcurrent value
kWh
ON/OFF
Menu setting key

Increase
Reduce



محافظ هوشمند ولتاژ تک فاز Intelligent Voltage1P

Technical Data

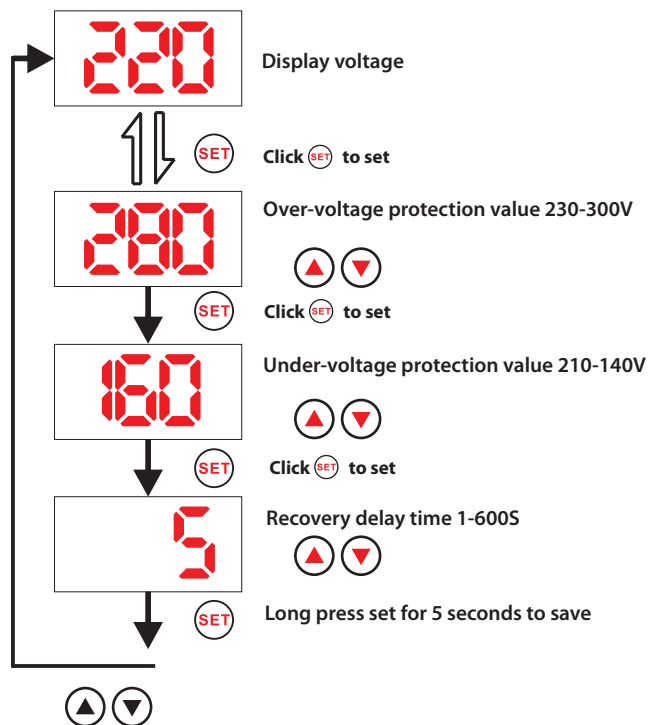
Rated supply voltage	AC 220V	Operation voltage range	AC 80~350V
Rated frequency	50/60Hz	Overvoltage(>U)setting Range	230~300V
Overvoltage(>U)setting Range	210~140V	Rated Current	40/63A(subject to protect label)
>U And <U Trip Delay	0.5S	Reset/Start Delay	1~600S
Voltage measurement accuracy	2% (Not exceeding of the overall range)	Rated Insulation Voltage	400V
Output contact	1NO	Electrical life	10 ⁵
Mechanical life	10 ⁶	Protection Degvree	IP20
Pollution Degree	3	Altitude	≤2000m
Operatintg temperature	-50 °C ~ 55 °C	Humidity	≤50%at40 C (without condensation)
Storage temperature	-30°C~70° C		

ISP2-V

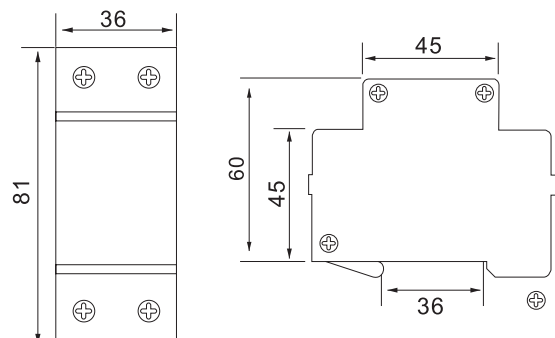
Default setting

Technical Parameter	Setting range	Step	Factory Setting
Over-Voltage Protection Value	230~300V	1V	280V
Under-Voltage Protection Value	210~140V	1V	160V
Recovery delay time	1~600s	1s	5s

Function setting



Wiring and shape dimension



To adjust the figure quickly by long time press the add or subract key

NEW



ISV-3P

ISV-1P

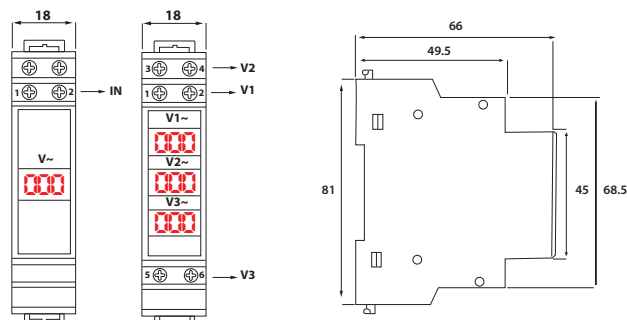
نمایشگر ولتاژ تک فاز / سه فاز Intelligent Voltage Indicator 1P/3P

Technical Parameter

Voltage Display Range	AC 80V-500V
Frequency Range	AC 50~60Hz
Color	Red
Discrepancy Range	±2%
Rated Insulation Voltage	660V
Sampling Rate	1time /s
Input loop power consumption	≤2VA
Altitude	≤2000m
Ambient Temperature	-50 ~ 55 °C
Humidity	50% and 40° C Condensation free
Storage Temperature	-30 °C~70°C

- This project is prohibited using for frequency conversion, inverter, thr power environment with high harmonic interference.

Product Dimensions



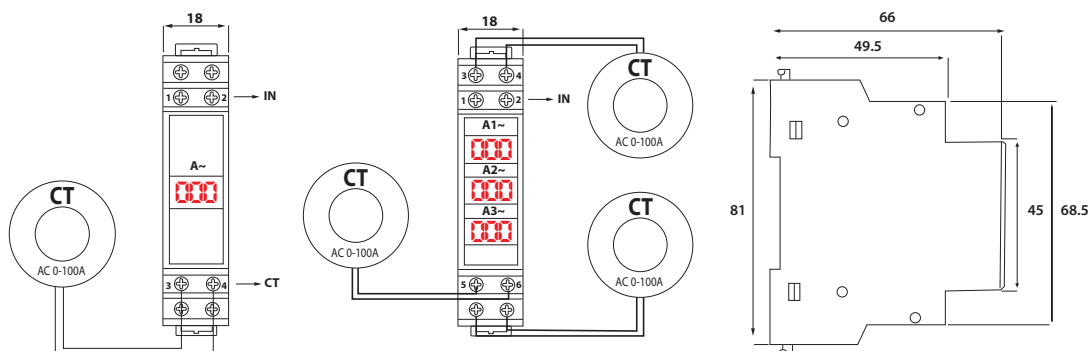
نمایشگر آمپر تک فاز / سه فاز Intelligent Amper Indicator 1P/3P

Technical Parameter

Supply Voltage / Frequency Range	AC 80V-500V / 50-60HZ
Current Range	AC 0-100A
Color	Red
Discrepancy Range	±2%
Rated Insulation Voltage	660V
Sampling Rate	1time /s
Input loop power consumption	≤2VA
Altitude	≤2000m
Ambient Temperature	-50 ~ 55 °C
Humidity	50% and 40° C Condensation free
Storage Temperature	-30°C ~70°C

- This project is prohibited using for frequency conversion, inverter, thr power environment with high harmonic interference.

Product Dimensions





IS52-2066

**نمایشگر مولتی فانکشن
ولتاژ/ جریان / فرکانس / ضریب توان / مصرف انرژی / توان**
Voltage/ Current/ Frequency/ PF/W/KWH 1P

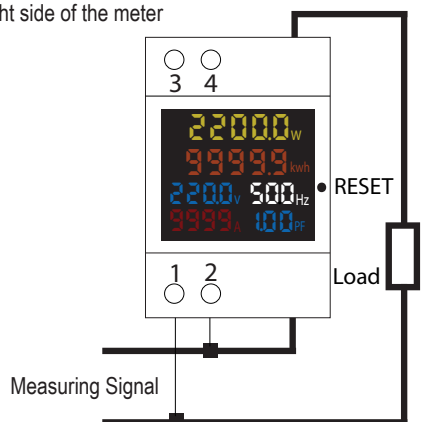
Technical Parameter

Accuracy	1%±2 words
Range	AC voltage: AC 40.0-300.0V or AC 200.0- 450.0V(You should one type of the meter in your order)
	AC current: 0.1~99.9A (You should order current transformer when current is higher than 100A independent)
	Frequency:45.0Hz-65.0Hz
	Power Factor:0.00-1.00PF
	Electric Power:0-450000W, the electric power resolution is 0.1W when measure electric power between 0-9999.9W, otherwise the electric power resolution is 1W.
Sampling rate	2 times per second
	Size
Size	54*80*64 mm
Installation	Din-rail

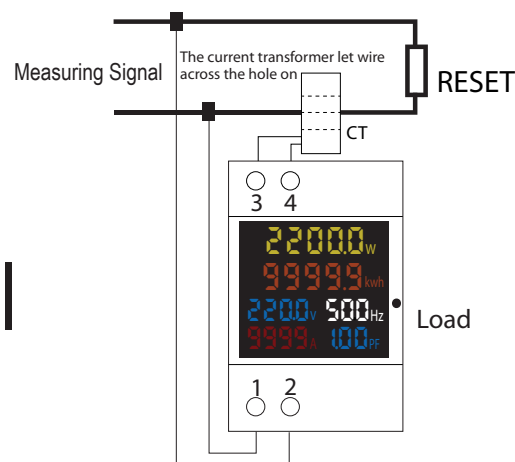
Application Method

- 1- Connect the measure voltage to the 1 and 2 terminal
- 2- Connection of meter with internal current transformer as graph 1. Make the wire through the hole in the hole in the meter and the direction chose arbitrarily.
- 3- Connections of meter with external current transformer as graph 2. Make the wire through the hole in the meter, and connect the two wires of the secondary transformer to the 3 and 4 terminal.
- 4- when power on, the meter display the measure parameters.
- 5- when power on, you can press the button of SAM CK last for 5 seconds, then the electric energy will to be zero and start to cumulate when release the button.
and when power off, the meter can save the value of electric energy and go on cumulating data when the meter power-on next.

Making the wire across the hole which in the right side of the meter



Graph2: Connet graph when AC current lower than 100A



Graph1: install current transformer



IS52-2066

نمایشگر مولتی فانکشن (طرح سیگنال)
ولتاژ/ جریان / فرکانس / ضریب توان / مصرف انرژی / توان
Voltage/ Current/ Frequency/ PF/W/KWH 1P

Technical Parameter

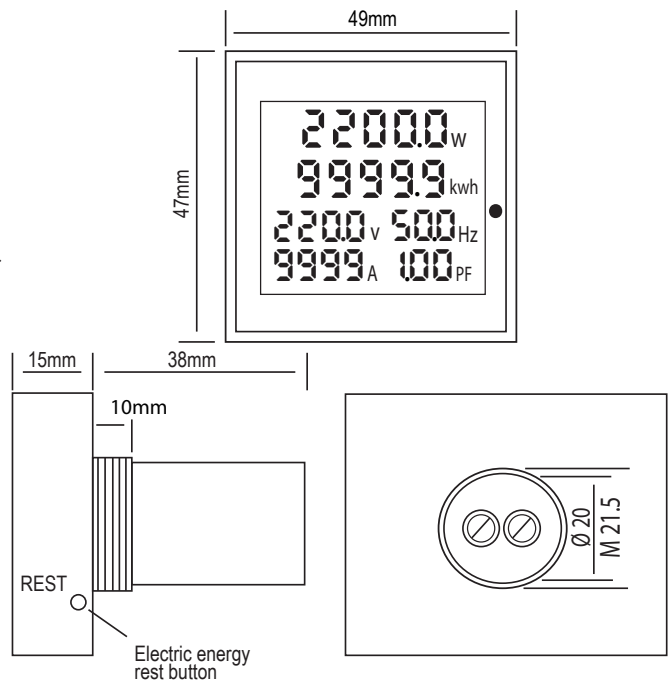
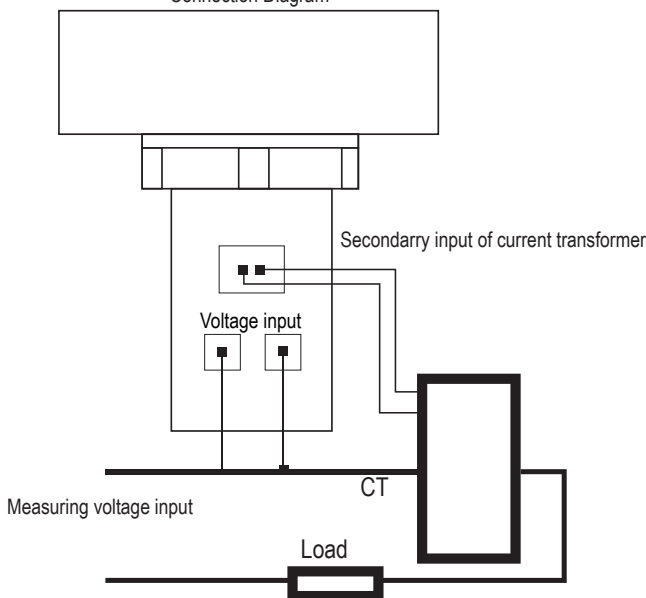
accuracy	1%
Display mode	0.5 inch LED digital tube
Range	AC voltage:80~300V, 200~450V(You should select the one of measuring range in your order) AC current:0.1~99.9A(You should order current transformer when current is higher than 100A independent)
Sampling Rate	2 per second
Size	54*80*64 mm
Installation	Din-rail

• This project is prohibited using for frequency conversion, inverter, thr power environment with high harmonic interference.

Application Method

- 1- According to the wiring diagram, connect the plug two-wire of the current transformer to transformer the input on meter, make the current return conductor across the hold which in the middle of the current transformer.
- 2- Connect the voltage measurement to the voltage input terminal of the meter. then turn on and measure the voltage to start to read the measure result.
- 3- the electric energy reset button is on the right- bottom of the meter. you can press the button with a needle last for.
- 4- Second, then the electric energy will be reset.

Connection Diagram



Attention

The meter with measure range between 250-450V can only use to measure 50Hz AC city electricity, it will be destroyed when use to measure aquare wave, output of inverter and correction sine wave. The meter with measure range between 50-300 not affected.